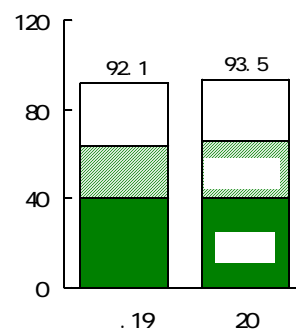
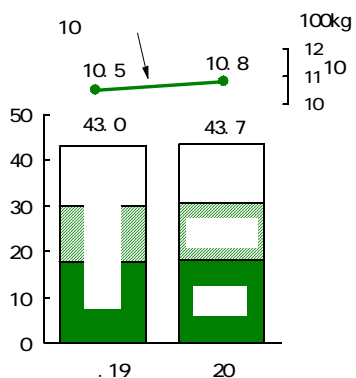
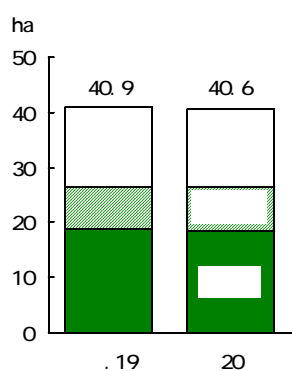
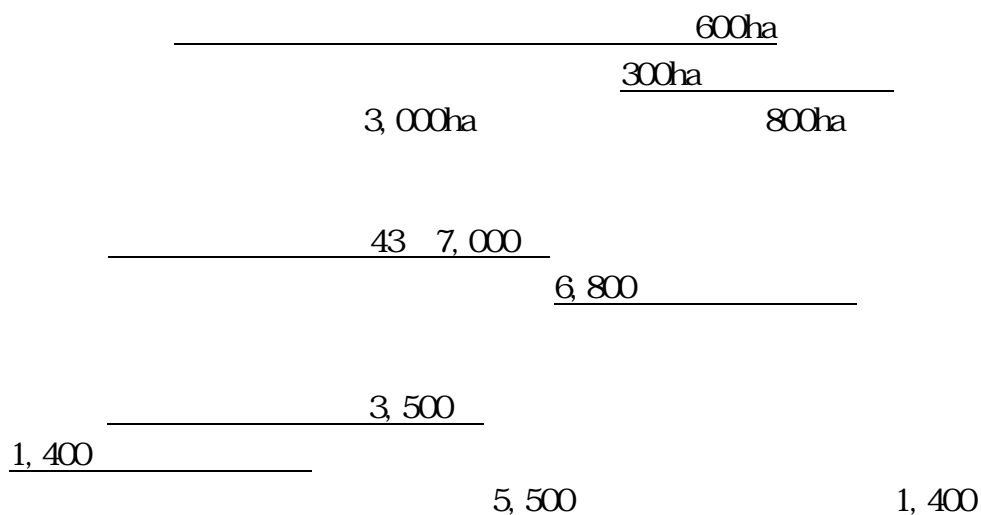


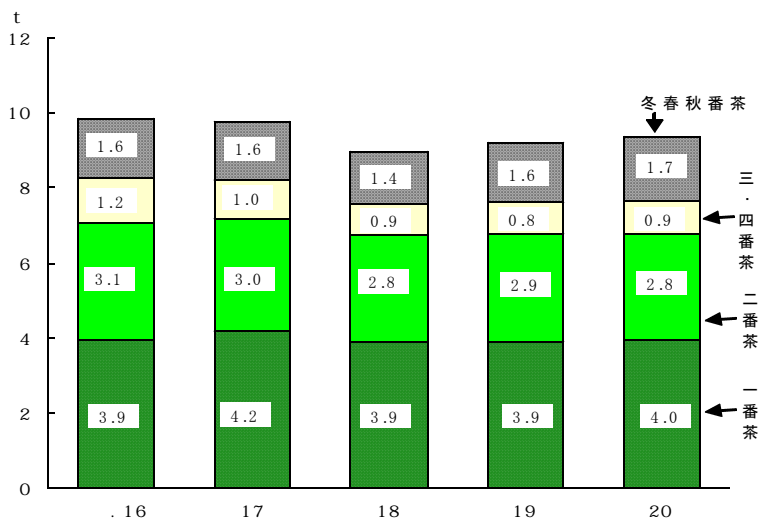
20



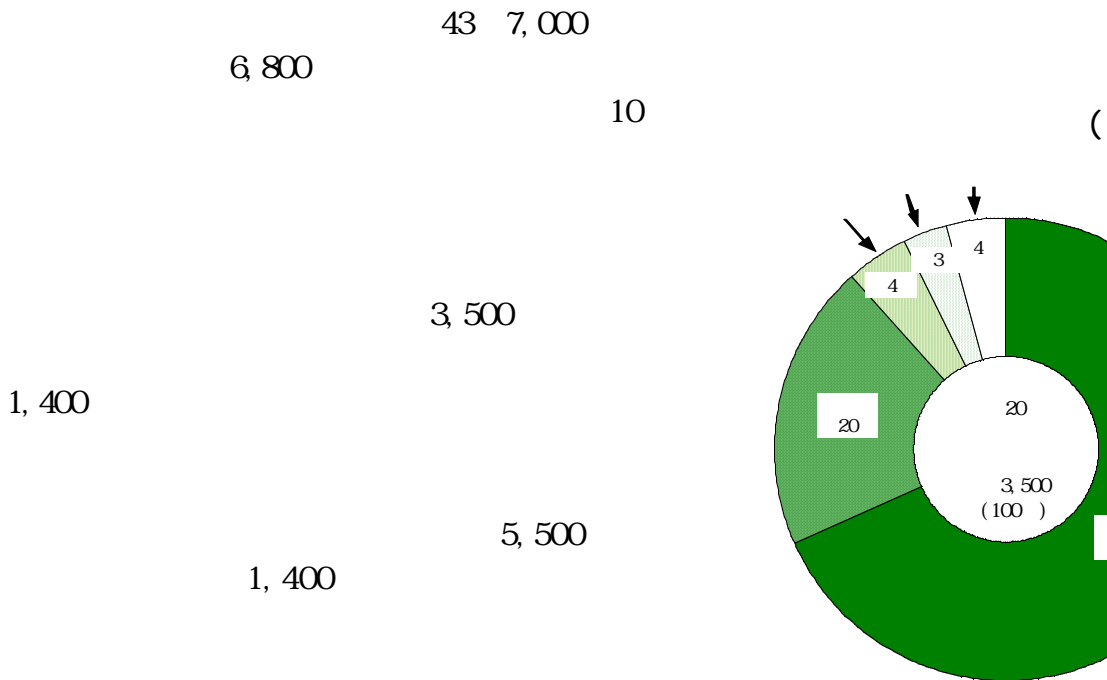
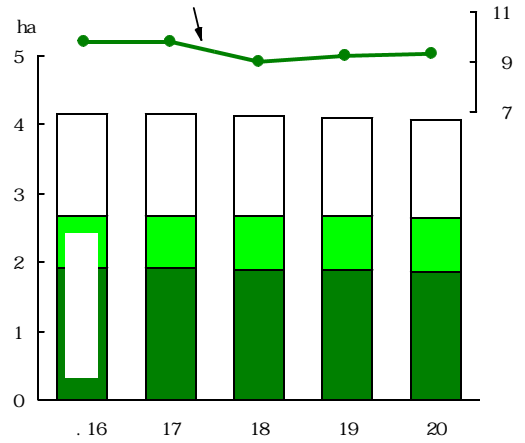


11	88 500	236	3 920	925	65 800	3 870	12 600	1 240
12	89 300
13	89 800
14	84 200	196	3 630	1 350	63 200	3 660	11 000	1 160
15	91 900	208	3 910	1 420	67 100	3 490	14 500	1 240
16	100 700	213	3 740	1 490	70 800	3 930	19 300	1 370
17	100 000	227	4 040	1 630	70 200	3 720	18 200	1 850
18	91 800	222	3 650	1 650	64 900	3 410	16 400	1 670
19	94 100	277	3 920	1 660	65 400	3 200	17 600	1 990
20 ()	95 500	412	4 220	1 780	65 300	2 930	19 100	1 780

11 14 15 16 12 13 17
18 19 20



300ha
600ha
10
10
30kg
1,080kg



	10	()									
	ha	kg	t								
	40 600	1 080	437 000	93 500	403	4 130	1 740	63 900	2 870	18 700	1 740
(t)	300	30	6 800	1 400	132	290	120	100	260	1 500	230
(%)	99	103	102	102	149	108	107	100	92	109	88
	95 500	412	4 220	1 780	65 300	2 930	19 100	1 780

(1)

16

80

(2)

(3)

	5,977	1,063	17.8	989	93.0	982

20 12

20 11

16

20

15

1.30

20

÷

× 100

(1)

20

(2)

(3)

(4)

(5)

(6)

(7)

	10	31	
		31	
		10	10 21
	11	10 20	12 31

10

10

(1)

	10		1 000	100
	123 456	12 345	1 234	123
	123 500	12 300	1 230	123

(2)

...

0.4ha 0ha

(3)

(1)

11

21 10

<http://www.naff.go.jp/j/tokei/>

<http://www.tdb.naff.go.jp/toukei/toukei>

>

<http://www.naff.go.jp/j/kanbo/>

>

<http://www.naff.go.jp/j/soushoku/>

>

<http://www.naff.go.jp/j/seisan/>

03(3502)5687

03(6744)2037